



Specialty Tools

Spark Plug Thread Repair for Ford Triton



Ford Cylinder Repair Set **249⁹⁹** Comes with Instructional Video

- SKU 104283 24200
- Repair of Ford Triton Modular Engines is Going to Be a Large Issue in Next 5 Years. Ford Triton Engines 1996 - 2003 Have a Problem With Spark Plug Thread Erosion, Resulting in Spark Plug Threads Coming Out During Tune-Up or Shooting Spark Plugs Out During Operation
 - Current Repair Takes About 10 Labor Hours, This Tool Cuts Time to 30 Minutes to an Hour
 - Works on Ford 4.6, 5.4, 6.8V10 Engines
 - Individual Inserts Available as Part Number 389-100. the Patented Replacement Insert is a Permanent Fix That Does Not Have to Be Replaced with Every Tune-Up
 - Patented Guide Makes Drilling and Tapping in a Straight Line Easy

Ford Triton Repair Insert

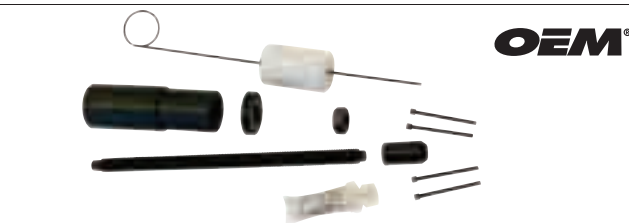
SKU 104287 24203 **34⁹⁹** each



Ford Spark Plug Extractor Set

SKU 104286 24201 **84⁹⁹**

- Works to Extract Frozen and Broken Off Spark Plug Sleeves in 2004 to Present Ford Triton Engines
- Specially Machined Guide Works With Extra Long Tap and Extractor to Make Sure the Job is Done Right



Ford Spark Plug Porcelain Extractor Set

SKU 104290 24202 **27⁹⁹**

- Used to Extract the Broken Porcelain from Broken Spark Plugs in 2003 to Current Ford Triton Engines
- In Some Cases the Porcelain Will Break Off in the Sleeve and Will Need to be Extracted in Order for the 39100 to Function Effectively
- Unlike Other Tools That Tell You to Push the Porcelain Through the Sleeve (Ford Says Specifically Not to Do This). This Tool Adheres to the Porcelain Using a Special Adhesive and Then Allows a User to Extract the Broken Porcelain from the Sleeve

Loctite 608005ml Replacement Adhesive

SKU 248475 24204 **9⁹⁹**

Replacement Pins

SKU 248476 24205 **11⁹⁹**

Ford Spark Plug Socket

SKU 110450 6900 **19⁹⁵**

- Use on 2004-Newer Ford Vehicles with 5.4L, 4.6L, 5.4L, 3-Valve Triton V8 and 6.8L Triton V10 Engines
- Socket End is 9/16". Soft Rubber Insert Holds and Protects Spark Plug During Removal and Installation
- Socket Has a 3/8" Drive for Use with a Ratchet or Breaker Bar



3/8" Drive 9/16" Spark Plug Socket

SKU 265110 25259 **19⁹⁹**

- Made with Chrome Vanadium steel for strength



FIX-A-THRED®

Ford Triton Plug-Saver® Kit

SKU 094873 25155 **149⁹⁹**

- Designed to Specifically Repair the Spark Plug Ports in 4.6, 5.4 and 6.8 Ford Triton Engines



Inserts (Pack of 8)

SKU 110263 25155 **27⁹⁹**

SKU 110263 25155 **27⁹⁹**



Spark Plug Thread Repair

14mm Tapered Spark Plug Thread Repair Kit

SKU 141511 25647 **29⁹⁹**

- Replaces Threads for 14mm Tapered Spark Plug



14mm Replacement Inserts

SKU 141512 25648 **9⁹⁹**

- 6 Pieces in Sizes M14 - 1.25
- Drill Size: 14.25mm; 9/16"



M14-1.25 Spark Plug Thread Repair System

SKU 557108 25643 **29⁹⁹**

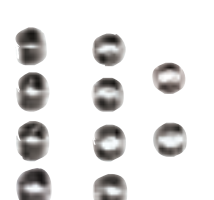
- Replaces Threads for 14mm Spark Plug



14mm Thread Inserts

SKU 557140 25644 **9⁹⁹**

- 10 Pieces in Sizes M14 - 1.25 x 3/8", 1/2", 3/4"
- Drill Size: 14.25mm; 9/16"



14mm Cylinder Head Rethreader Kit

SKU 265137 25649 **16⁹⁹**

- Tap is Designed for Aluminum Heads Only
- Set Includes Combination Tap, Reamer and Locking Compound
- And 3/8", 7/16", 1/2" and 3/4" Inserts



Thread Restoring File, Tap and Die Kit

SKU 391372 27142 **90⁰⁰**

- Thread File Metric Pitches: .75, 1, 1.25, 1.50, 1.75, 2, 2.5, and 3mm #2 Thread File Pitches: 11, 12, 13, 14, 16, 18, 20, and 24 Threads Per Inch #3 Thread File Pitches: 9, 10, 12, 16, 20, 27, 28 and 32 Threads Per Inch Taps: 1/4" - 9/16" Popular Sizes (Course and Fine); 6-14mm | Popular Sizes Pitches Dies: 1/4" - 9/16" (Course and Fine)

Thread Chasers

Spark Plug Hole Thread Chaser

SKU 070109 25124 **6⁹⁹**

- Size: 14mm x 18mm



Limited Access Spark Plug Chaser

SKU 607068 25155 **8⁹⁹**

- Size: M14 x 1.25



Thread Repair

UNC (Coarse) Series Kits - SAE

*STORE STOCK

SKU	Part No.	Size	Price
516462	25600	UNC 10 - 24	19.99
557009*	25602	UNC 1/4" - 20	21.99
557017*	25604	UNC 5/16" - 18	21.99
557090*	25606	UNC 3/8" - 18	21.99
516464*	25608	UNC 7/16" - 14	29.99
516467*	25610	UNC 1/2" - 13	29.99



UNC (Coarse) Series Kits - Metric

*STORE STOCK

SKU	Part No.	Size	Price
466584	25624	M5 - .8	29.99
516472*	25626	M6 - 1	29.99
516474*	25628	M8 - 1.25	29.99
466586	25630	M10 - 1	29.99
516477*	25632	M10 - 1.15	29.99



UNF (Fine) Series Kits

*STORE STOCK

SKU	Part No.	Size	Price
516469	25612	UNF 10 - 32	27.99
466578	25614	UNF 1/4 - 28	29.99



Thread Repair Inserts

UNC (Coarse) Series - SAE

*STORE STOCK

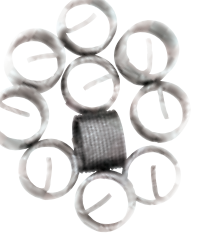
SKU	Part No.	Size	Price
516463	25601	UNC 10 - 24	7.99
557116*	25603	UNC 1/4" - 20	6.99
557124*	25605	UNC 5/16" - 18	6.99
557132*	25607	UNC 3/8" - 16	7.99
516465*	25609	UNC 7/16" - 14	7.99
516468*	25611	UNC 1/2" - 13	9.99



UNC (Coarse) Series - Metric

*STORE STOCK

SKU	Part No.	Size	Price
516473*	25627	M6 - 1	5.99
516475*	25629	M8 - 1.25	7.99
466587	25631	M10 - 1.0	7.99
516478*	25633	M10 - 1.5	7.99
978102	25635	M12 - 1.75	9.99



UNF (Fine) Series - SAE

*STORE STOCK

SKU	Part No.	Size	Price
516470	25613	UNF 10 - 32	3.99
978101	25623	UNF 1/2" - 20	9.99



Oxygen Sensors

FIX-A-THRED®

Oxygen Sensor M18 Repair Kit

SKU 094872 25155 **99⁹⁹**

- Contains All Tools Necessary to Repair Damaged Oxygen Sensor Threads in the Exhaust Manifold



Oxygen Sensor Thread Chaser

SKU 607067 25255 **9⁹⁹**

STORE STOCK



Specialty Tools

Rivet Tools

OEM

360° Rotating Head Riveter

SKU 291357 25920 **24⁹⁹**

- 360° Rotating Hand Riveter
- Comes with rivet nozzles in sizes: 3/32" (4 MM), 1/8" (3.2 MM), 5/32" (4.0 MM) and 3/16" (4.8 MM)



Professional Riveter HP2

SKU 094876 MAR39000HP2 **29⁹⁹**

- Sets Up to 3/16" Steel Rivets
- Mounted Nosepieces: 3/32", 1/8", 5/32" and 3/16"



Klik-Turn Sp-1 Hand Rivet Tool

SKU 094881 MAR39005 **37⁹⁹**

Patented Positive-Ratchet Locking Feature Allows the Swivel Head to Turn 360° and Hold in Place in any of 40 Positions

- Includes: 3/32", 1/8", 5/32" and 3/16" Nosepieces

Professional Riveter HP3

SKU 094878 MAR39002HP3 **43⁹⁹**

This Multi-Functional Hand Rivet Tool Offers Long, Ergonomically Designed Handles to Increase Leverage, and to Secure the Rivet in the Nosepiece While the Tool is in Use, in Any Position



Includes: 4 Standard Nosepieces to Set 3/32", 1/8", 5/32" and 3/16". Blind Rivets in All Alloys

Industrial Riveter

SKU 291353 25921 **49⁹⁹**

- For use with steel and aluminum rivets noses: 1/8" (3.2 mm), 5/32" (4.0 mm), 3/16" (4.8 mm), 1/4" (6.4 mm)
- 18" Overall Size with Long Handle Provide More Leverage.



Deluxe Riveter Kit

SKU 094877 MAR39001Kit **37⁹⁹**

The Choice of Professionals

- Kit Includes HP2 Riveter. (Sets Up to 3/16" Diameter Rivets), 200 Rivets and Molded Case
- 39003 Same as 39001 but Contains 200 Assorted Klik-Fast Stainless Steel Rivets

SKU 094879 MAR39003Kit **38⁹⁹**

Stainless Steel



Big Daddy Hand Riveter

SKU 094886 MAR39031 **139⁹⁹**

The Big Daddy is the Most Versatile and Powerful Hand Riveter. Sets Large Diameter Blind Rivets



Double Gear Reduction System Easily Sets from 1/8" to 1/4" Diameter Klik-Fast Rivets in All Alloys Including 1/4" Klik-Split Rivets

- Comes with 5/32", 3/16" and 1/4" Nosepieces Stored in the Body

Snips

Aviation Snips

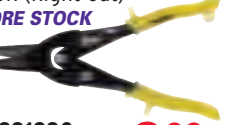
SKU 914011 TA10L (Left Cut) **7⁹⁹**

STORE STOCK



SKU 914012 TA10R (Right Cut) **7⁹⁹**

STORE STOCK



SKU 231330 TA10S (Straight Cut) **9⁹⁹**

STORE STOCK



- Straight Cut, 1-5/8" Serrated Blades
- Cuts Up to 18 Gauge Metal

Windshield Tools

Window Molding Clip Remover

SKU 265130 25338 **9⁹⁹**

- Use To Release Body Molding Clips
- The Double-Sided Design Works on a Variety of Clip Configurations



Window Holder

SKU 191670 25309 **9⁹⁹**

- Works on All Cars and Trucks with a Top Door Frame
- Loop Cable Over Door Frame and Attach Suction Cups to Each Side of Glass



OEM



Windshield Wiper Arm Puller

SKU 191681 25319 **10⁹⁹**

- Easily Removes Wiper Arms on Most Domestic and Foreign Vehicles

OTC



Windshield Wiper Puller

SKU 112554 4676 **10⁹⁹**

- Removes Wiper Arms on Many Foreign and Domestic Cars and Light Trucks
- Will Not Damage Wiper Arm or Hood Cowling During Removal

OEM



Universal Wiper Arm Puller

SKU 265136 25339 **29⁹⁹**

- Prevents Damage to Wiper Arm
- Cross-Piece Special for Wiper Featuring a Nozzle

OEM



Double Head Suction Cups

SKU 291351 24246 **12⁹⁹**

- Twin Head Suction Cups Help Remove Windshields
- ABS Rubber Cups Grab Hold to Glass
- Flexible Handle Bends to Windshield

Hood Prop

Universal Lift Support Adjuster

SKU 191671 25307 **10⁹⁹**

- Holds Weak Gas-Charged Lift Supports Open on Hoods, Tailgates, Hatchbacks and Trunks



Hood Prop with Adapter

SKU 291352 LIS46170 **39⁹⁹**

- Includes a Support To Help Prevent Slipping
- Three Piece Telescoping Shaft Locks in Any Position to Hold Hood to Desired Height-Telescopes from 20" to 48 1/4"



Spring Compressors



StrutTamer™ Extreme Spring Compressor

SKU 110446 6592 **874⁹⁹**

Simply the Most Effective Compressor for Virtually Any Straight, Conical, or Offset Spring.

- Extreme Duty Design to Handle the Heavier Springs Found on Mid- and Some Full-Size Truck Strut Assemblies
- 2:1 Reduction Gearbox - Standard. Allows for a 2:1 Torque Compression Increase When Compressing Struts
- The Arms Adjust In and Out, Up and Down, to Accept Many Sizes of Springs. (2-1/2" to 10" Diameter) (2-1/2" to 24" Vertical Stroke)

- Lock Rings to Hold Arms In Position - Standard. This Eliminates Arms from Spreading or Sliding When Compressing Offset or Unique Strut Configurations
- Four-Point Locking Jaws Securely Hold the Spring in Place
- Extra Long 3-Bar Handle Gives User the Leverage Needed to Compress Heavier Strut Springs
- Comes With No. 6583 Bridge Accessory to Be Used On Springs That Cannot Be Compressed Enough to Remove the Retaining Nut

Includes StrutTamer Spring Compressor, No. 6587 Gear Box, No. 6583 Bridge Accessory and No. 6582 Mobile Stand

OTC



StrutTamer Extreme

SKU 112537 6591 **749⁹⁹**

- Used for Any Straight, Conical or Offset Spring
- Extreme Duty Design to Handle the Heavier Springs Found on Mid- and Some Full-Size Truck Strut Assemblies
- Frame Includes Cross Bracing at Arm Mount Locations Eliminating Frame Flex When Compressing Heavier Springs
- 2:1 Reduction Gearbox - Standard
- Lock Rings to Hold Arms in Position Eliminating Spreading or Sliding When Compressing Offset or Unique Strut Configurations
- Extra Long 3-Bar Handle Gives User the Leverage Needed to Compress Heavier Strut Springs

OTC

Strut Spring / Coil Spring Compressor Kit

SKU 094802 27203 **79⁹⁹**

- Used to Compress Most Sizes of Macpherson Springs and Coil Springs



Coil Spring Compressor

SKU 555573 27035 **50⁰⁰**

- Used to Compress the Coil Spring in the Installation of Coil Spring Spacers



W-Body Strut Service Kit

SKU 069343 27034 **110⁰⁰**

- Used to Remove and Replace the Strut Cartridge on GM W-Body Vehicles



MacPherson Strut Spring Compressor

SKU 070135 25550 **34⁹⁹**

- The Macpherson Strut Spring Compressor Is Used To Compress Strut Spring During Cartridge Replacement.
- Forged Hook
- Heat Treated Forcing Screw
- Safety Latches



Wall Mount Strut Spring Compressor

SKU 534403 BRA7400 **842⁹⁹**

- 24" Stroke Compresses to 2"
- Double-Start, Heavy-Duty ACME Threads
- Handles Heavy Coil Spring Shocks, Extra Long, Narrow or Angled Springs and F-150 and Toyota RAV4 Without Additional Adapters
- Three-Point Lower Hook Increments Adjust for Uniform Spring Compression; "Common Center" Compression Hooks Fit Between Tightly Wound Coil Springs



Sensor Sockets

7 Piece Sensor Socket Set

SKU 900823 27189 **59⁹⁹**

- For Removal and Installation of Hard to Reach Oxygen Sensors, Oil Pressure Switches, Oil Pressure Sending Units and Thermal Sensor Switches



Oxygen Sensor Wrench

SKU 948079 27162 **25⁰⁰**

STORE STOCK

- Use with Oxygen Sensors on Ford 4.6 and 5.4 Engines
- 7/8"/22mm Used in SUVs and Light Trucks



Water Sensor Socket

SKU 607072 25369 **6⁹⁹**

STORE STOCK

- Remove Water Sensor When Changing the Fuel Filter on GM 6.6L Duramax Diesel Engines
- 3/8" Square Drive



Oil Pressure Switch Socket

SKU 141490 25254 **9⁹⁹**

- Fits Most 1" and 1-1/16" Switches
- Accepts Oil Pressure Sending Units up to 2-5/8" Long



3/8" Drive Oxygen Sensor Socket

SKU 047738 25001 **10⁴⁹**

STORE STOCK

- For Use with 3/8" Drive Ratchet or 1" Wrench



Oxygen Sensor Socket Set

SKU 272729 27110 **25⁰⁰**

STORE STOCK

- Universal Slotted Socket to Service Hex Vacuum Switches and Oxygen Sensors
- 3/8" and 1/2" Drive, 22mm/7/8"





Specialty Tools

Shop Tools

4 Piece Stud Remover Set

SKU 391368 **30⁰⁰**
 27136 (SAE)

STORE STOCK

SKU 391371 **30⁰⁰**
 27140 (Metric)

STORE STOCK



- SAE: Used to Remove and Install 1/4", 5/16", 3/8" and 7/16" Studs
- Metric: Used to Remove and Install 6, 8, 10 and 12 mm Studs

Mechanic's Stethoscope

SKU 070131 **9⁹⁹**
 25210

STORE STOCK

- Locate Troubles in Engines, Bearings and Other Moving Parts Fast and Easy

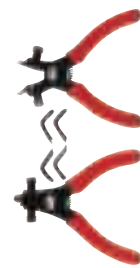


Professional Snap Ring Plier Set

SKU 141502 **16⁹⁹**
 25356

STORE STOCK

- 180°, 90° and 45° in One
- Tip Size: 0.8mm, 1.2mm, 1.4mm, 2.0mm



5 Piece Utility Tool Set

SKU 094662 **29⁹⁹**
 25944

- Includes Short Blade Scraper, 1/2" Carbon Scraper, Long Blade Scraper, Cotter Key Puller and Pick and Hook



Bushing Driver Set

SKU 391369 **50⁰⁰**
 27137

STORE STOCK

- Used to Install and Remove Small and Medium Sized Bushings



Extended Scraper

SKU 070133 **9⁹⁹**
 25500

STORE STOCK

- Removes Carbon and Old Gasket Materials from Engine Parts



10 Piece Snap Ring Plier Set

SKU 900819 **61⁹⁹**
 27180

- Operates Both Internal and External Rings



4 Piece 15" Jumbo Pick Set

SKU 094658 **29⁹⁹**
 25940

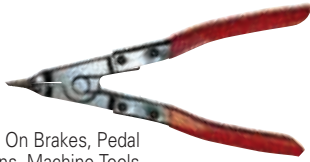
- Includes: Straight Pick, 90° Pick, Offset Pick and Hook Pick



Angle Tip Lock Ring Pliers

SKU 191055 **12⁹⁹**
 25354

- Used to Spread Snap Rings Found On Brakes, Pedal Shafts, Clutch Shafts, Transmissions, Machine Tools and Some Piston Rings
- Jaws Are Scored on the Outside for Secure Gripping
- Spring Loaded Jaws
- Spread: 3/4"
- Length: 8 1/4"



Razor Blades (100 Pack)

SKU 070127 **9⁹⁹**
 25181

STORE STOCK

100 Piece Utility Blades

SKU 447105 **17⁹⁹**
 12282

- Resealable Safety Dispenser Holding 100 #9 Razor Blades



27" Magnetic 2-in-1 Pick-Up Tool

SKU 989264 **11⁹⁹**
 25292

- 4 Claw for Easy Pick-Up
- Magnetic End with Extra Strong Hold



4 Piece Scraper Set

SKU 915392 **11⁹⁹**
 25514

- Set Includes: 1/2" x 10", 3/4" x 10", 1" x 10" and 1-1/2" x 10"

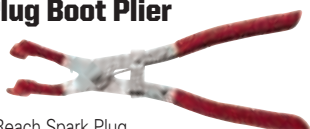


Heavy Duty Spark Plug Boot Plier

SKU 390900 **8⁹⁹**
 25542

STORE STOCK

- Designed to Remove Hard to Reach Spark Plug Boots
- Do Not Use When the Engine is Running



3 Piece Ultra Tech Lighted Tweezers Set

SKU 186542 **29⁹⁹**
 GTC70400

- 3 Piece Set, Pointed, Bent and Blunt Tips
- LED Light Push On/Push Off
- Non Slip Comfort Grips
- Includes 3 "LR41" Batteries



3 Piece Dead Blow Hammer Set

SKU 900804 **26⁹⁹**
 25517

- Includes 1/2 Lb, 1 Lb and 2 Lbs
- Soft Rubber Handles for Non-Slip Grip



3 Piece Heavy Duty Pry Bar Set

SKU 900808 **15⁹⁹**
 25516

- Sizes: 25", 17" and 12"
- Carbon Steel with Heat Treated Square Shanks



16 Piece Mechanic's Punch and Chisel Set

SKU 914624 **19⁹⁹**
 25515

- Includes: 5 Taper Punches, 5 Pin Punches, 2 Center Punches, 3 Cold Chisels and 1 Chisel Gauge



Exhaust Tools

Exhaust Donut Stretcher

SKU 390901 **4⁹⁹**
 25543

- Easily Grabs onto Mounting Rubber Rings or Doughnut used on Many Exhaust Systems



Tailpipe Expander 1-1/2" to 2-7/16"

SKU 111039 **25⁰⁰**
 27027

STORE STOCK

- Expands Tail Pipes so Mufflers and Tail Pipes Can be Fitted to the Exhaust System



Tailpipe Expander 2-1/8" to 3-7/16"

SKU 110585 **35⁰⁰**
 27028

STORE STOCK

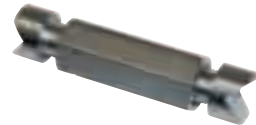
- Expands Tail Pipes so Mufflers and Tail Pipes Can be Fitted to the Exhaust System



Exhaust Manifold Spreader

SKU 191674 **9⁹⁹**
 25253

- A Simple Way to Expand a Warped Manifold So All Bolt Holes Are Accurately Aligned



Tailpipe Cutter

SKU 111609 **50⁰⁰**
 27045

- Used to Cut Tail Pipe
- Range 3/4" to 3-1/4" (19-83mm)



Disconnect Tools

Heater Hose Disconnect Tool

SKU 143439 **20⁰⁰**
 27106

STORE STOCK

- Removes Heater Hoses with 5/8" or 1/4" Quick Disconnect Couplings on '86 to Current Ford Aerostar Vans and '01 to Current Full Size Ford Vans
- Works on Rear Heater Hose Couplings on '86 to Current Chrysler and Plymouth

Ford/GM Fuel Line Disconnect Set

SKU 391365 **15⁰⁰**
 27131

STORE STOCK

- 5/16" and 3/8"



Chrysler Fuel Line Disconnect

SKU 391366 **5⁰⁰**
 27132

STORE STOCK

- Used to Disconnect Fuel Lines on Most Chrysler Vehicles



Fuel Line Disconnect Tool

SKU 246367 **7⁹⁹**
 25043

STORE STOCK

- Fits Any 5/16" or 3/8" Fuel Line Found on GM, Ford, and Chrysler Vehicles



3 Piece 1/2" Oil Line Disconnect Set

SKU 094653 **24⁹⁹**
 25187

- Used to Remove and Replace Oil and Transmission Cooler Lines



4 Piece Disconnect Disc Set

SKU 864648 **19⁹⁹**
 25150

STORE STOCK

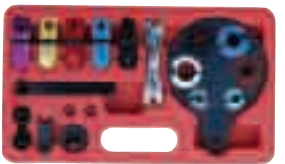
- Sizes: 1/4", 1/2", 5/16" and 3/8"



15 Piece Master Set

SKU 900807 **39⁹⁹**
 27195

- Includes Fuel and Transmission Line Disconnect Set, Oil Cooler Line Remover, Air Conditioning and Fuel Line Disconnect Tool



4 Piece Disconnect Set

SKU 948999 **24⁹⁹**
 25183

STORE STOCK

- Includes: 1/2", 5/8", 3/4" and 7/8"



Fuel Module Disconnect

SKU 291418 **7⁹⁹**
 LIS37500

- Fits Both 3/8" and 5/16" Connectors and Applications
- Tool Can Be Clipped Together for Convenient Storage



Angled Disconnect Set

SKU 291416 **20⁹⁹**
 LIS39400

- Disconnects spring lock couplings on Ford and Chrysler AC lines
- Works On Fuel Lines and Other Quick Disconnect Couplings On Domestic and Import Vehicles
- Six sizes 5/16", 3/8", 1/2", 5/8", 3/4" and 7/8"



Master Disconnect Tool Set

SKU 291413 **57⁹⁹**
 LIS39900

- Contains 8 Tools for A/C and Fuel Lines
- Stored In a Handy Blow-Molded Case



Ford Clutch Disconnect Tool

SKU 391364 **5⁰⁰**
 27130

STORE STOCK

- Works on 1988 to Present Ford Vehicles and Light Trucks with Hydraulic Clutches

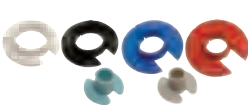


A/C and Fuel Line Quick Connect Tools

SKU 002356 **9⁹⁹**
 25052

STORE STOCK

- Easily Disconnects Air Conditioning Lines and Quick Connect Fuel Lines



A/C and Fuel Line Disconnect Tool Set

SKU 246366 **6⁹⁹**
 25042

STORE STOCK

- Range: A (3/4"), B (5/8"), C (1/2") and D (3/8")



10 Piece Master Disconnect Set

SKU 265109 **39⁹⁹**
 25188

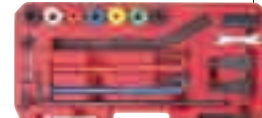
- Sizes: 9.5mm / 3/8", 8mm / 5/16", 9.5mm / 3/8" Cooler Line, 9.5mm / 3/8" Oil Cooler Line, (2) 1/2 Oil, 16mm / 3/8", 13mm / 1/2", 19mm / 3/4", 22mm / 7/8"



22 Piece Disconnect Master Set

SKU 900817 **79⁹⁹**
 27177

- Includes Quick Connects Set, Air Conditioning and Fuel Line Disconnect Tools



Quick Connect Tools

SKU 970541 **29⁹⁹**
 25182

- Sizes: 1/4", 1/2", 5/16" and 3/8"
- Oil Cooler Line Disconnect Tool Separates Automatic Transmission Oil Cooler Lines on Ford Taurus and Escort with AXOD and ATX Transmissions



Quick Connect Tools

SKU 363869 **11⁹⁹**
 25184

STORE STOCK

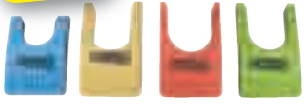
- Sizes: 3/8", 1/2", 5/8" and 3/4"
- Enables Quick and Easy Disconnect of Air Conditioning Couplings



NEW Coolant Hose Removal Tool Set

SKU 383214 **24⁹⁹**
 CAL244TNZ

- Used to Completely Fill the Void in the Connector to Release the Fastener
- 40° Offset Designed for Jobs Up Against the Firewall or in Tight Spaces



Specialty Tools

Electrical



2 Piece Circuit Tester Set

SKU 989205
25889
17⁹⁹

- Includes a Wire Stripper/Cutter/Crimper and a Coiled Cord Circuit Tester
- 6, 12 and 24 Volt Systems



Mini Circuit Tester

SKU 989209
25936
9⁹⁹

- Tests 6/12 Volt Systems



Coiled Cord Circuit Tester

SKU 422468
25886
9⁹⁹

STORE STOCK

- 6, 12 and 24 Volt Systems



Replacement Bulbs

SKU 422714
25888
2⁹⁹

- Replacement Bulb for OEM Circuit Testers: 25018, 25019, 25886 and 25887



Digital Test Light™

SKU 186530
INN3430
29⁹⁹

- Digital Display and Color Coated LED's
- Quick Voltage Readings of Electric Circuits

White = Proper Connection to Source
Red = Voltage Present
Green = Ground Present



Smart Test Light™

SKU 186535
INN3420
19⁹⁹

- Designed to Safely Check Voltage and/or Ground on Wiring, Fuses, Battery, Cabling, Sensors, Switches and More
- Connects Using a Cigarette Lighter / Power Plug and Detachable Twin Alligator Clamps
- Unique Transparent Handle Shows Bright LEDs to Identify Connections: White = Proper Connection, Red = Voltage Present, Green = Ground Present



Relay Test Jumper Set

SKU 291333
LIS56810
70⁹⁹

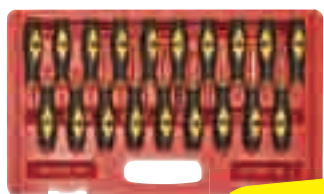
- Set Includes Four Jumpers to Fit the Most Popular Size Relays On Domestic and Import Vehicles
- Jumpers Have Tabs for Clamping and Flat Pads to Place Test Leads On



Relay Circuit Tester

SKU 383450
27211
139⁹⁹

- Used to Test Relay Circuits in Late Model Vehicles
- Can Also Be Used to Perform Easy Combination Tests, Fuel Pressure Tests and Jump Relay for A/C Fill



19 Piece Master Terminal Tool Kit

SKU 447159
27169
109⁹⁹

- Eliminates potential damage to wires or terminal blocks

Wire Terminal Tools

SKU 191676
25228 (Green)
14⁹⁹

SKU 255953
25229 (Red)
14⁹⁹

- Fits Most GM and Domestic Motors Computer Connectors and Terminals



Relay Puller Pliers

SKU 291342
LIS46950
23⁹⁹

- Works On Many Heavy-Duty and Industrial Applications
- Allows Relay to Pop Free From Socket With Less Chance Of Damaging the Relay

Wire Cutter/Stripper Combo

SKU 191685
25192 (Small)
12⁹⁹

SKU 191686
25197 (Large)
16⁹⁹

- Self-adjusts to Wire Sizes: 14AWG to 26AWG



Relay Test Jumper Set II

SKU 291341
LIS60610
70⁹⁹

- Set Includes Four Jumpers to Fit Many Popular Relays on Honda, Nissan, Toyota, Newer Ford and GM Mini Micro Relays As Well As International Trucks

Wire Stripper/Cutter/Crimper & Bolt Cutter

SKU 312821
25193
9⁹⁹

- Cushioned Handle Grips



In-Line Ignition Spark Tester

SKU 900800
25227
6⁹⁹

- Ignition Spark Tester for Automotive Troubleshooting



Remote Starter Switch

SKU 265124
25330
14⁹⁹

- Heavy Clips With Insulated Sleeves Attach to Ground and Starter Solenoid Switch
- Thumb Activated Switch
- 6 Foot Heavy Insulated Wire for Long Tool Life



Remote Starter Switch HEAVY DUTY

SKU 265127
25331
39⁹⁹

- Heavy Duty, Push Button Remote Starter Allows Technicians to Bump or Crank Engines While Under the Hood
- 5 Foot Heavy Insulated Wire for Long Tool Life
- Heavy Duty Insulated Alligator Clips

LED Indicator Light Shows Current is Present →



Measuring Tools

Mechanical Digital Rotor Micrometer

SKU 186497
CEN3M230
57⁹⁹

- 3-1/2" Deep Frame
- Digital Read Out to .001"
- .300 to 1.300" Range



3 Piece Micrometer Set

SKU 186503
CEN3M113
84⁹⁹

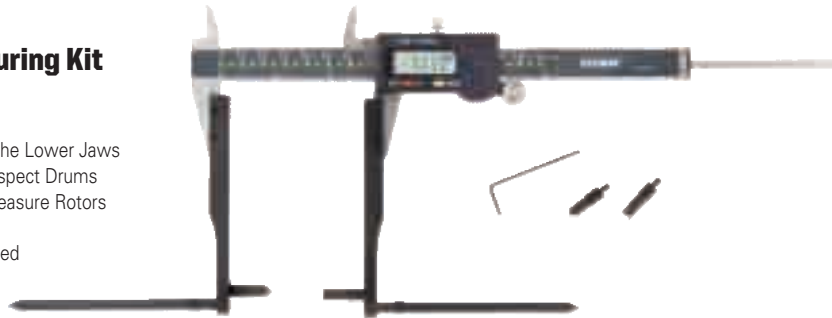
- 0 to 3" Range
- 0 to 1" 3m101, 1 to 2" 3m102, 2 to 3" 3m103
- Set Includes Calibration Tools



Rotor/Drum Measuring Kit

SKU 186504
CEN3K301
59⁹⁹

- Attaches to Any Caliper on the Lower Jaws
- Outward Facing Anvils to Inspect Drums
- Inward Pointing Anvils to Measure Rotors
- 8 to 13" Range
- 0 to 6" Digital Caliper Included



Angle Finder

SKU 186499
CEN6494
44⁹⁹

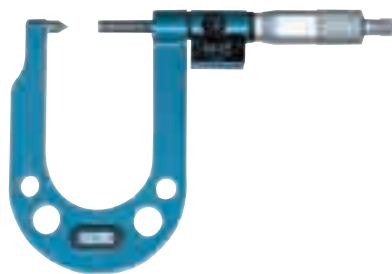
- Measure Auto and Truck Front Ends
- Measure Drive Shaft Angles
- Magnet in Base
- Graduated in 1/2 Degree Increments

Measuring Tools

X-Tread Digital Tire Gauge

SKU 186495
FOW74225500
15⁹⁹

- For Tire Tread Thickness Measurement
- Reads in Inch, Metric and Fractions



Disc Brake Rotor Micrometer

SKU 186498
FOW72234422
63⁹⁹

- Easy to Read Digital Counter
- Range is 0.3" to 1.7"
- Ratchet Thimble



Mini MAG Protractor

SKU 186501
FOW744224501
62⁹⁹

- Embedded Magnets with 35 Lbs Pull
- Uses Standard 9v Battery
- 360 Degree Measuring Range
- Accuracy +/- 2 Degrees



Dial Indicator Set

SKU 186500
FOW72522101
54⁹⁹

- Includes 1" Indicator, Magnetic Base Plus Rods, Swivel Clamp and Case
- 2-1/4" Dial, .001" Increments



RotoCal with Twin Conical Anvils

SKU 186492
FOW74150004
62⁹⁹

- Range 0 to 5.5"
- Reads in Inch, Metric and Fractions
- 3.5" Jaw Depth for Large Rotors



Disc Brake/Ball Joint Gage

SKU 186496
FOW72520757
72⁹⁹

- Checks Ball Joint Wear and Disc Rotor Run-out
- Checks Gear Backlash and Valve Guide Wear
- 0 to 1" Travel and .001" Graduations

Measuring Tools

6" Dial Caliper

SKU 141504
25362
19⁹⁹

- Outside, Inside, Depth and Step Measurements
- Each Division = .001", Each Revolution = .1"
- Thumb Roller with Locking Device
- Measuring Surfaces are Precision Ground and Lapped



Feeler Gauge

SKU 001927
25025
6⁹⁹

STORE STOCK

- 26 Blades with Laser Etched In/mm



Brake Drum Caliper*

SKU 965840
25368
159⁹⁹

- Measure Range: 0-530mm, 0-20.6"
- Precision: ±0.02mm

***While Supplies Last**



Disc Brake Rotor Micrometer

SKU 607071
25367
49⁹⁹

STORE STOCK

- .001" Accuracy, .0005" Reading
- Large LCD Display with SAE or Metric Reading
- Manual Power Off/On



Electronic Digital Caliper

SKU 864649
25363
29⁹⁹

STORE STOCK

- Large Easy to Read LCD Display
- Zeroing Feature
- Thumb Roller with Locking Device

