

# ENGINE SERVICE TOOLS

## STOP the Knock!

- Cam Phaser Knock on the 4.6/5.4L 3V Engines is Common in Older Models and Can Lead to Bigger Problems If Not Fixed
- There are Millions of Trucks on the Road with This Problem, But Until Now, There Have Been Few Good Options to Permanently Help Fix the Knock
- This Kit Helps to Eliminate Any Knocking Noise Heard from the Front Valve Cover/Timing Cover Related to the Phasers
- All-in-One Kit Corrects the Cam Phaser Knock on ONE Engine
- Labor Guide Suggests 8½ Hours
- Easy to Follow DVD Instructions



SCAN FOR INSTRUCTIONAL VIDEO

**This Kit is the Only True, Long Term Repair for Ford Cam Phaser Noise on the Market**



**Stop Saying No to Business and Be Confident Your Customers Will Be Satisfied!**

## Ford Cam Phaser Noise Repair Kit (4.6/5.4 3V Engines)

SKU 494959 LMEF1503V **699<sup>99</sup>**

### Kit Includes:

- Wedge Tool for Easier Installation
- (2) OEM Quality Phaser Bolts
- (2) Lock Outs
- Programmer with OBD-II Cable
- Instructional DVD



Product Made by High-Performance Engine Specialists:



Ford, Livernois and logos featured or referred to on this page are the property of their respective trademark holders

## SAVE \$10

### Timing Gear Holder

SKU 544797 24387 **39<sup>99</sup>** REG: \$49.99

- Holds the Timing Gear in Place During Removal and Installation and Prevents It from Moving While the Retaining Bolt Is Removed
- Allows the Cam Gear to Rotate to Align Valve Timing Marks
- Single Lever Locking Design Is Easy-to-Use



Offer Good Through June 30, 2016 - While Supplies Last

### Valve Tools

#### Valve Spring Compressor

SKU 231210 25220 **19<sup>99</sup>**

#### STORE STOCK

- Designed for Use On Most Trucks and Cars with Overhead Valves



#### Ford Valve Spring Compressor

SKU 626111 24434 **69<sup>99</sup>**

- Applications: 1991-2004 Ford Vehicles with 4.6L, 2V, V8 Engines; 4.6 4V, 5.4 V8 and 6.8 V10
- Works with Engine Removed or Installed, Cylinder Head On or Off
- Not for Triton 5.4 3V



#### Push Rod Remover

SKU 459100 LIS48300 **24<sup>99</sup>**

- Re-Designed for Newer 3.5L and 3.6L GM Engines - Also Works On GM V6 2.8L, 3.1L and 3.4L
- Quickly Removes Push Rods to Replace the Intake Gaskets without Removing Rocker Arms



#### Parallel Lift Spring Compressor

SKU 516515 27075 **71<sup>99</sup>**

- Strong but Light Frame - Weighs Only 6 Lbs.
- Works with Most Valve-in Head and L-Head Engines As Well As Truck and Tractor Engines
- Capacity 1" - 2" Springs
- Throat Depth 10"
- Includes Straight and Offset Jaws



### Piston Tools

#### Piston Ring Compressor (2-1/8" - 5")

SKU 531921 25037 **13<sup>99</sup>**

#### STORE STOCK

- Constructed of High Grade Spring Steel with 1/4" Square Drive Adjuster
- Beaded Edge Prevents Tool from Entering Cylinder with Pistons



#### Piston Ring Compressor (3-1/2" - 7")

SKU 531947 25039 **16<sup>99</sup>**

#### STORE STOCK

- Constructed of High Grade Spring Steel with 1/4" Square Drive Adjuster
- Beaded Edge Prevents Tool from Entering Cylinder with Pistons



#### Wrinkle Band Compressor

SKU 246373 25257 **22<sup>99</sup>**

- 1-1/2" Deep Low Friction Wrinkle Band
- Fits 3" to 5" Pistons



#### Ridge Reamer

SKU 532325 25051 **31<sup>99</sup>**

- Capacity 3" to 5" (76 mm to 127 mm)
- For Use On Conventional and Slant-Block Engines



#### Piston Ring Compressor Set

SKU 526501 WLMW89410 **34<sup>99</sup>**

- You Get Six Band Sizes for Multiple Applications and the Pliers Can Be Used Parallel or Perpendicular to the Cylinder Block
- Set Comes in a Blow Mold Case
  - 2-7/8" - 3-1/8" (73 - 79 mm)
  - 3-1/8" - 3-3/8" (79 - 86 mm)
  - 3-3/8" - 3-5/8" (86 - 92 mm)
  - 3-5/8" - 3-7/8" (92 - 98 mm)
  - 3-7/8" - 4-1/8" (98 - 105 mm)



While Supplies Last

### Cam/Crankshaft Tools

#### 2 Piece Cam Clamp™ Set

SKU 238159 24360 **24<sup>99</sup>**

#### STORE STOCK

- Specifically Designed to Retain Sprocket Wheels While Maintaining Proper Timing During Belt Service
- Simple to Use
- Installs in Seconds



#### Ford 2.0L, 2.3L, 2.5L Cam Tool Kit

SKU 626108 24448 **24<sup>99</sup>**

- Applications: 2.0L DOHC Engines Found in 1994-2003 Ford and Mercury, 2004-2012 2.5L DOHC, 2.3L DOHC 4V and 2.0L DOHC Engines in Ford, Mercury and Mazda, and 2.0L DOHC Engines in 1993-1994 Ford Probe



#### 17 mm Crank Bolt Socket

SKU 818785 CAL981 **29<sup>99</sup>**

#### 19 mm Crank Bolt Socket

SKU 818784 CAL982 **29<sup>99</sup>**

#### 21 mm Crank Bolt Socket

SKU 818782 CAL983 **29<sup>99</sup>**

- Remove Stubborn Crankshaft Pulley Bolts- No Special Tool Required
- Increase Working Torque Up to 50%
- Works with Any Standard 1/2" Impact



#### DOHC Cam Lock Holder

SKU 291419 LIS36880 **39<sup>99</sup>**

- This Versatile Tool Easily Locks and Holds Both Camshaft Sprockets Firmly in Place
- Preserves the Engine Timing During Belt or Chain Replacement



#### Honda Crankshaft Pulley Holding Tool

SKU 217379 27176 **39<sup>99</sup>**

- Holds Crankshaft Dampeners When Tightening/Loosening Crankshaft Bolts On Honda and Acura Engines 1990 to Present



#### 5 Piece Master Cam Clamp Kit

SKU 383452 27210 **79<sup>99</sup>**

- Covers Most Single, Twin Cam and Quad Cam Engines
- Locks Camshaft to Hold Valve Timing During Timing Belt Replacement



#### Camshaft and Crankshaft Seal Tool Kit

SKU 544799 24386 **99<sup>99</sup>**

- Easily Remove and Install Camshaft and Crankshaft Seals
- Compact Puller with Unique Extracting Hooks Engage Seal for Quick Removal
- Interchangeable Sleeves and Mandrels Allow Easy Installation of New Seal
- Suits Seals from 21.5 mm - 64 mm
- Sleeves and Mandrels Made from High Strength Fiber Glass Reinforced Polymer



Scan for Instructions on How to Use This Universal Seal Tool Kit

#### Universal Camshaft Bearing Tool

SKU 191677 27143 **229<sup>99</sup>**

- Removes or Inserts Camshaft Bearings in Nearly All Engines
- Easy On Bearings
- Range: 1.125" to 2.69"
- Set Includes: Driving Shaft, Driving Shaft Extension, Expander Unit, (5) Split Driving Plugs, (2) Driving Collars and Center in Cone



#### Crank Seal Remover and Installer Kit

SKU 512952 27222 **149<sup>99</sup>**

- Used to Install and Remove Oil Seals Between 27 mm and 58 mm in Diameter





Contact Us:  
**1-877-AZTool1** Phone  
 (1-877-298-6651) *Hablamos Español*

### Throttle Depressors



**Throttle Pedal Depressor**  
 SKU 222525  
 LIS48700

**31<sup>99</sup>**

- Holds Throttle at a Constant RPM
- Length: 40"



**OEM TOOLS**



**Brake - Accelerator Pedal Depressor**  
 SKU 802194  
 24232

**29<sup>99</sup>**

- Easy to Adjust
- Extends to 24"
- Suitable for Many Diagnostic Applications

### Belt Tools

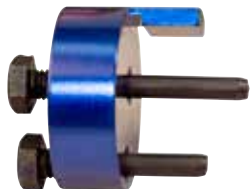
#### Stretch Belt Installation Tool

SKU 227301  
 24363

**21<sup>99</sup>**

**STORE STOCK**

- Works On Both Large and Small Pulleys
- Clamping Jaw Allows User to Position Serpentine Belt without the Belt Slipping Out of the Tool



**OEM TOOLS**

#### Stretch Belt Mate Kit

SKU 544729  
 24388

**12<sup>99</sup>**

- Easily Installs All Stretch Fit Belts



**OEM TOOLS**



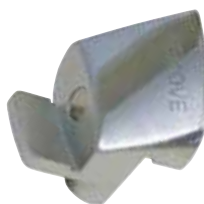
Scan for Instructions on How to Use Stretch Belt Mate Kit

#### Stretch Belt Remover and Installer

SKU 255866  
 LIS59370

**22<sup>99</sup>**

- Unique Magnetic Faces Hold the Tool in Place On the Pulley
- Compact, One-Piece Tool Can Be Used On the Front or Back Side of the Pulley



### Serpentine Belt Tool

SKU 695121  
 33627115

**30<sup>99</sup>**

- Provides Required Leverage and Clearance to Release Spring Pressure and Remove Tensioner Pulley



**OEM TOOLS**

### Block Testers

#### Block Tester

SKU 695104  
 33627145

**25<sup>99</sup>**

- Locate Internal Combustion Leaks Quickly and Easily
- When Fluid Turns from Blue to Yellow a Combustion Leak Is Present



**OEM TOOLS**

#### Block Tester Test Fluid (8 Oz.)

SKU 391381  
 25739

**8<sup>99</sup>**

- Use with Block Tester #33627145



**OEM TOOLS**

### Engine Cylinder Honers



#### Adjustable Engine Cylinder Honer Deglazer

SKU 532002  
 25041

**31<sup>99</sup>**

**STORE STOCK**

- Range: 2" to 7" (51 mm to 128 mm)
- Spring Tension Adjusting Nut for Positive Cutting Action at All Speeds
- Supplied with 4" Medium Grit Stones

#### Replacement Stone Sets



SKU 141540  
 2541C

**11<sup>99</sup>**

- 3 Coarse Grit (#100)

SKU 532036  
 2541M

**11<sup>99</sup>**

- 3 Medium Grit (#220)

SKU 532044  
 2541F

**9<sup>99</sup>**

- 3 Fine Grit (#400)



#### Flex-Hone BC

10 mm (.394") 6.4 mm (.250")  
 SKU 341249 SKU 343384  
 BRMBC10M18 BRMBC64M24

**24<sup>99</sup>**

**24<sup>99</sup>**



#### Flex-Hone GB

3-1/2" (89 mm) 3-1/4" (83 mm)  
 SKU 341239 SKU 341232  
 BRMGB31212 BRMGB31412

**47<sup>99</sup>**

**47<sup>99</sup>**

3-3/4" (95 mm)

SKU 341317  
 BRMGB33412

**53<sup>99</sup>**

4-1/8" (105 mm)

SKU 341325  
 BRMGB41812

**57<sup>99</sup>**

4-5/8" (118 mm)

SKU 341332  
 BRMGB45812

**63<sup>99</sup>**

CALL FOR ADDITIONAL SIZES

**FLEX-HONE®**

**FLEX-HONE®**

## SAVE \$50

### Fan Clutch Service Set for Mercedes-Benz and BMW

SKU 512958  
 27224

**149<sup>99</sup>**

REG: \$199.99

- Removes Lock Nuts On Thermo Viscous Fans Found On Mercedes-Benz, BMW and Many Ford Models
- Includes:
  - (1) Mercedes-Benz Fan Clutch Wrenches - 36 mm, 40 mm and 65 mm Opening
  - (1) BMW Fan Clutch Wrench - 3 mm Opening
  - (1) BMW Fan Clutch Holding Wrench - 38 mm and 44.5 mm
  - (1) Mercedes-Benz Fan Clutch Holding Tool



Offer Good Through June 30, 2016 - While Supplies Last

### Fan Clutch Tools

#### Universal Pulley and Fan Clutch Holder

SKU 547013  
 27281

**69<sup>99</sup>**

- Fits Many Different Fan Clutches, Cam and Crank Pulleys with Slots or Holes
- Pin Sizes: 6 - 10 mm, 8 - 11 mm, 10 - 12 mm, 11 - 16 mm
- Adjustable Diameter: 1-1/2" - 8-5/8"



**OEM TOOLS**

#### Universal Fan Wrench Set

SKU 080554  
 LIS43600

**73<sup>99</sup>**

- Use On the Most Popular Applications
- Unique Hooked Wrench Design Will Hold Bolted On Water Pump Pulleys By Applying Pressure Against Another Bolt
- Double-Sided Spanner Style Holding Wrench Will Hold Pressed On Pulleys On Many GM, Jeep and Dodge Vehicles



#### Fan Clutch Wrench Set

SKU 110280  
 27186

**79<sup>99</sup>**

- OEM Master Fan Clutch Wrench Set Combines OEM #27108 and OEM #27141 into a Master Set
- Ideal for Removing Fan Clutches from Water Pumps
- Set Includes: 36, 40, 48, 54, 57, 68, 72, 76 and 83 mm Wrench Sizes



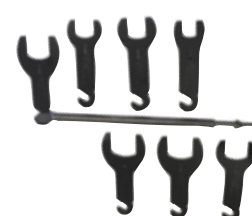
**OEM TOOLS**

#### Pneumatic Fan Clutch Wrench Set

SKU 291409  
 LIS43300

**182<sup>99</sup>**

- Quickly Removes and Installs Fan Clutch When Repairing the Water Pump or Fan Clutch
- Set Includes: 36, 41 and 42 mm; 1.5", 1-9/16", 1-7/8" and 2" Wrench Sizes



### Clutch Tools

#### Duramax Flywheel Lock

SKU 301613  
 LIS22100

**49<sup>99</sup>**

- Locks Flywheel in Place When Removing Harmonic Balancer On 6.6L Duramax with Allison Transmissions
- Saves Time By Locking the Flywheel at the Transmission Instead of Having to Remove the Starter for Water Pump Replacement



#### Flywheel Turner

SKU 505066  
 LIS23800

**34<sup>99</sup>**

- For Turning and Holding Flexplates and Flywheels
- Easily Turn Engine from Underneath the Vehicle



### Freeze Plug Tool

#### MasterFreeze Plug Installation Tool Kit

SKU 965837  
 27208

**99<sup>99</sup>**

- Designed to Remove and Install Freeze Plugs Used in Liquid-Cooled Gas and Diesel Engines



**OEM TOOLS**